

groov▶▶e

GV-SB03 SOUNDBAR75

75W Compact Bluetooth Soundbar





30 Day Right To Return

We do not envisage any problems occurring with your groov-e GV-SB03 75W Compact Bluetooth Soundbar. However, for your peace of mind, should any fault occur, please return it within 30 days to your retailer with proof of purchase for an exchange or refund.



12 Month Guarantee

This product is guaranteed for twelve months. Please retain your receipt as this will be required as proof of purchase in the event that the device does not perform as expected then please contact your original point of purchase, should you require further assistance then please contact us.



Extended Warranty

Please register your product within 30 days from date of purchase

www.groov-e.co.uk/warranty.

Proof of purchase required.



Contact Us

Reach out to us at **info@groov-e.co.uk** or visit **www.groov-e.co.uk**

“Congratulations on your purchase and **Thank You** for choosing the groov-e **GV-SB03** 75W Compact Bluetooth Soundbar. Please read the guide carefully before using”.

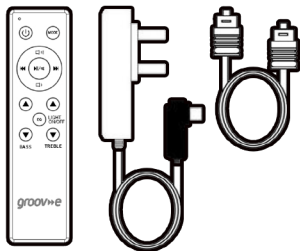
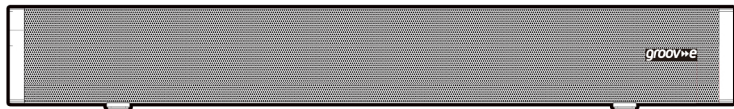
CAUTION

- 1• Keep the product and all its parts out of reach of small children.
- 2• Do NOT leave it in high temperatures as electronic devices and plastic parts may warp in heat. No naked flame sources, such as lighted candles, should be placed on the product.
- 3• Do NOT leave it in low temperatures as moisture can form inside the product, which may damage the circuit board.
- 4• Do NOT attempt to open the product. This product does not contain any user serviceable parts. Unauthorised handling of the device may damage it and will void your warranty.
- 5• Disconnect your Soundbar from the mains power supply during thunderstorms.
- 6• Always check that you have completely switched off your Soundbar, before you change or disconnect the power supply.
- 7• Never throw batteries in a fire or attempt to open the outer casing. Batteries should not be exposed to excessive heat such as sunshine, fire or the like. Dispose of old batteries carefully.
- 8• Batteries are harmful if swallowed, so keep away from young children.

Box Contents

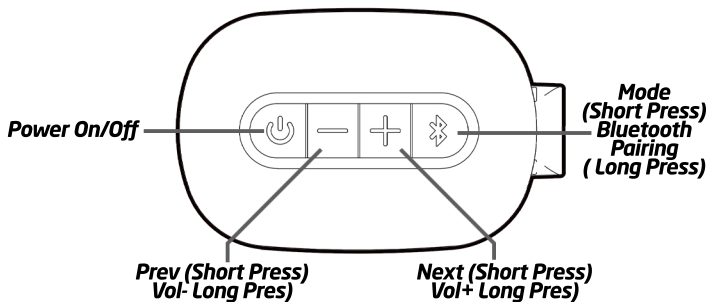
- GV-SB03 Soundbar x 1
- Remote Control x 1
- Power Adapter x 1
- Optical Cable x 1
- Wall Mount Template and Fixings x1
- User Manual x1

OVERVIEW

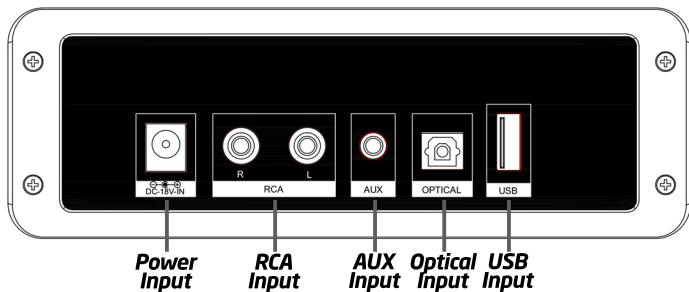


Functions

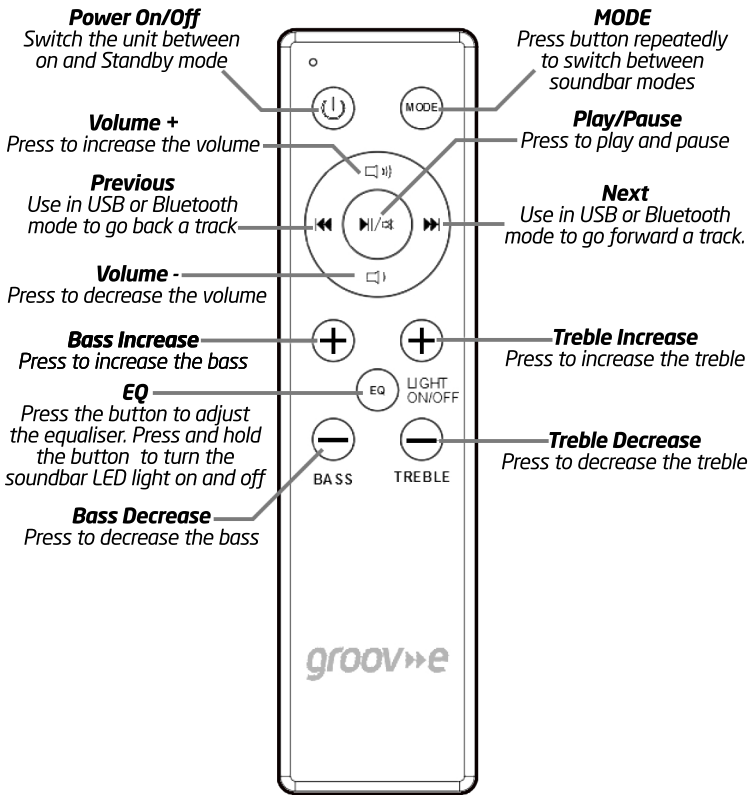
SIDE VIEW



BACK VIEW



Remote Buttons



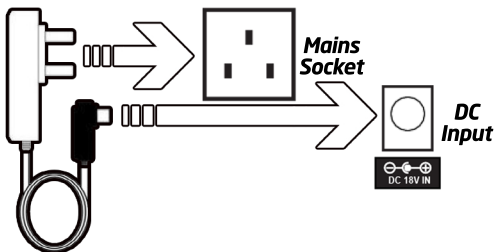
Using the Remote Control

The remote control sensor at the front of the soundbar is sensitive to the remote control's commands up to a maximum of 8 metres away and within a maximum arc of 30 degrees. Please note that the operating distance may vary depending on the brightness of the room.

Instructions

Connecting to the mains supply

Ensure that the power supply voltage is in the voltage of 100V~240V. This unit is designed to use the supplied adapter only. Connecting the unit to any other power source may cause damage to the unit. Unwind the mains cable to its full length. Connect the mains plug to a mains socket. Make sure the mains plug is fully inserted into the mains socket. Connect the adapter to the unit via the DC input Socket. (DC-18V-IN)



NOTE: Ensure all audio connections of the unit are connected before connecting to the mains power socket.

Using the Bluetooth

Pairing a Bluetooth Device for the First Time. Press the **POWER** button on the unit or the **POWER** button on the remote control to switch on the unit. Select and press the **MODE** button repeatedly on the remote control until in Bluetooth mode or press the **Mode** button repeatedly on the soundbar to enter Bluetooth mode. Using the controls on your Bluetooth device, select the "**GV-SB03**" in your Bluetooth settings to pair. Refer to the user manual for your specific device for instructions on pairing and connecting Bluetooth devices. When successfully paired and connected, a beep will issue from the unit. After initial pairing, the unit will stay paired unless unpaired manually by the user. If your device should become unpaired or you find it is unable to connect, repeat the above steps.

Playing Audio Wirelessly

Follow the instructions for pairing a Bluetooth device. Use the controls on the connected Bluetooth Device to select a track. To Play/Pause the track or Skip Forwards/Backwards to a selected track, use the remote control. Audio played through the connected Bluetooth device will now be heard.

Instructions

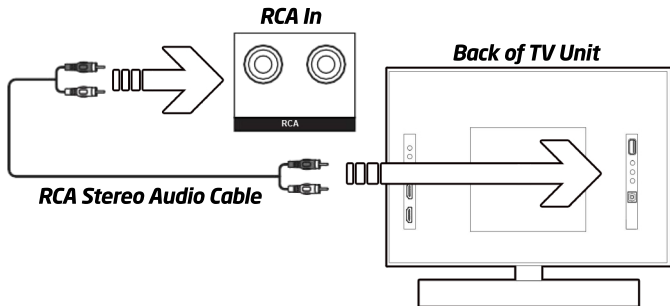
Using USB

Insert a USB drive to Play Music Automatically. Select and press the **MODE** button repeatedly on the remote control until in USB mode or press the Mode button repeatedly on the sound bar to enter USB mode. To Play/Pause the track or Skip Forwards/Backwards to a selected track, use the remote control. Audio played through the connected USB device will now be heard.

Using the RCA IN Cable

Use an RCA Stereo Audio Cable (not supplied) to connect to the TV's stereo RCA (L/R) audio output sockets. Connect the audio output cable of the soundbar via the 'RCA' input sockets of the unit. Then press MODE on the remote control or press the Mode button on the unit to scroll to the RCA function. Turn on your television

Troubleshooting: If you are not receiving a picture or encountering interference, please ensure that the RCA cable is being connected to the 'output' RCA port on your TV set. This will ensure that the sound is being exported correctly. If your TV does not have 'output' RCA port, please use an alternative connection method.



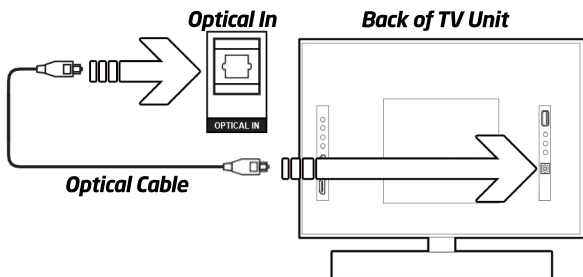
Instructions

Using Optical Input

You will need: An audio source with an Optical Audio Output and an Optical cable (included).

Connect the Optical Audio cable to the optical output on the audio source and to the Optical Input on the soundbar. Press the **POWER** button on the soundbar or **POWER** button directly on the remote control to switch on the unit. Press the **MODE** button on the remote control to switch to Optical mode or select the **MODE** button on the main unit press repeatedly to select the Optical mode.

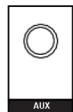
Using the controls on your connected device, make sure the audio settings are set to PCM or Audio and are turned On. Audio from the connected audio source will now be played through the speakers.



Using the AUX

Plug one end of a 3.5mm to 3.5mm Aux In cable (not supplied) into the AUX port on the unit. Before use, disconnect any cables connected to the Stereo RCA Inputs. Then plug the other end of the cable into the audio output or an MP3 player or other audio source. Press the **Power** button on the soundbar or **Power** button directly on the remote control to switch on the unit. Press the Mode button repeatedly on the soundbar or press the **MODE** button on remote control repeatedly to enter AUX mode. Audio played through the connected device will now be heard through the speakers.

AUX In



Audio Player

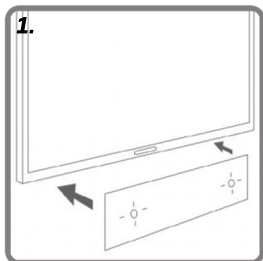


Troubleshooting

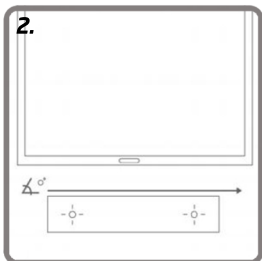
If the soundbar does not work properly as desired, please check the following.

Malfunction	Possible Cause/Measures
<i>No power / function</i>	<i>Check whether the power is switched on or off at the wall. Check whether the power adaptor is properly connected to power outlet or not.</i>
<i>No sound</i>	<i>Check whether cables are properly installed. If they are, please try alternative cable to connect to your TV if possible. Check unit is out of standby and in mode.</i>
<i>No sound from Bluetooth connection</i>	<i>Disconnect the soundbar from your device and reconnect.</i>
<i>Function disturbance</i>	<i>Switch off and unplug the unit. Leave it for 2 minutes and switch it on again. If a particular mode is causing problems, please try an alternative connection to your TV such as Optical or Bluetooth.</i>
<i>Remote control does not work [properly]</i>	<i>Check whether the batteries have run out or not. Replace with a new ones if necessary. Check whether there is an obstacle blocking the remotes signal.</i>

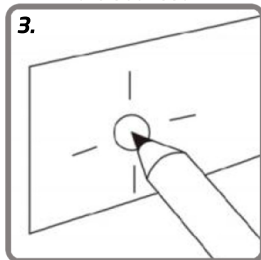
Wall Mount Installation



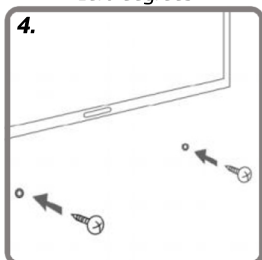
Place the paper guide on the wall where you want to hang the Soundbar



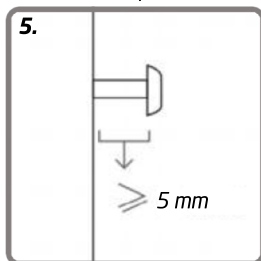
Verify with a level gauge that the inclination of the Soundbar is zero degrees



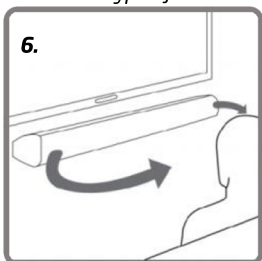
Locate the screw holes on the paper guide and mark a point with a pencil.



Make the holes with the corresponding drill bit according to the type of wall.



It is advisable to leave no more than 5mm between the head of the screw and the wall to minimise the inclination angle of the Soundbar.



For better sound experience, it is advisable to place the Soundbar at the same height as your ears.

FEATURES

- Speakers: 30W RMS power & 75W peak power
- Full-range speakers with super bass
- Compatible with most TV's for home theatre sound
- Wireless Bluetooth speaker
 - connect to your TV, PC, Laptop, Computer,
- Smartphone, Tablet
- LED display panel
- Crisp & clear sound with deep base
- 3 sound modes (Music, Movie, Voice)
- Base & Treble controls
- Easy controls
- 5 Input modes: Optical, RCA, USB, AUX (3.5mm) Bluetooth
 - 1.5M Optical cable (included)
 - Wall mountable (kit included)
 - Remote control (included)
 - requires 2 x AAA batteries (not included)

SPECIFICATIONS

Bluetooth chipset: 5.0
Bluetooth profiles: A2DP, AVRCP, SPP
Bluetooth frequency range: 2.402-2.480 GHz
RF output power 2dB
Wireless range: 10M (open area)
Power supply:
AC100~240V/50~60Hz, DC 18V/1.3A
Speaker power: 30W (2 x 15W)
Speaker channel: 2.0



75W
Power



Bluetooth
Connectivity



Super
Bass



Remote
Control



Optical Cable
Included

BATTERY REMOVAL/DISPOSAL

This product contains batteries and should not be treated as normal household waste and should be recycled. Please take it to your nearest collection facility or for further details contact your local council or visit www.recycle-more.co.uk Batteries contain substances that may be harmful to the environment and human health. Keep out of the reach of children and seek immediate medical help if swallowed.

Never throw batteries into a fire or attempt to open the outer casing. Should your product develop a fault and your battery needs replacing for further advice on how to safely remove your battery please visit our website at www.groov-e.co.uk

Environment Protection

Waste electrical products should not be disposed of with household waste. Please recycle where facilities exist.

Check with you Local Authority or retailer for recycling advice.



GUARANTEE

Subject to the conditions stated below, Groov-e guarantees this equipment against defects in workmanship or materials of its mechanical and electronic component parts (excluding styling, battery cells, magnetic tapes, re-chargeable batteries, user removeable memory devices, with the exception where the battery is inbuilt into the product) for a period of one year from the date of purchase. This product will be repaired or if necessary replaced free of charge if it has been proven to be defective within the one year warranty period.

1) Claims under this guarantee should be made through the authorised dealer/retailer from whom the equipment was purchased. If this is not possible, please contact Groov-e directly.

2) This guarantee is only valid when the equipment is purchased and retained within the United Kingdom and a valid proof of purchase has been provided.

3) This Guarantee Excludes:

(i) All damage caused through accident, misuse, wear and tear, neglect, installation and/or use in a manner inconsistent with technical and safety standards.

(ii) Alterations or adjustments made to equipment

(iii) Loss of data resultant from malfunction of hard drive or other storage device

(iv) Damage caused to any third party device as a result of using the product.

4) No liability under this guarantee shall be incurred:

(i) In respect of damage or loss occurring during transit to or from the purchaser

(ii) Where the serial number plate of the equipment has been removed or altered in any way.

5) Groov-e shall not be liable for consequential damage, loss or injury arising from or in connection with the equipment, excepting only that nothing in this condition shall or shall be construed so as to exclude or restrict liability for negligence.

6) The cost of carriage to and from Groov-e shall be borne by the purchaser.

7) This guarantee is personal to the original purchaser and is not transferable.

8) If the equipment, in respect of which a claim hereunder is made, is found on examination to comply with the published specifications, a test fee may be incurred.

This guarantee is in addition to and does not in any way affect any statutory or other right of consumer purchasers, including those rights in relation to sections 13 to 15 of the Sale of Goods Act 1979, the Sale and Supply of Goods to Consumer Regulations 2002, The Consumer Rights Act 2015 or the Sale of Goods and Supply of Services Act 1980 (for ROI).

DECLARATION OF CONFORMANCE

Groov-e hereby declares that this product is in compliance with the essential requirements and other relevant provisions of the Radio Equipment Directive 2014/53/EU. The complete declaration of conformity can be requested from us at:

groov»e

Unit J

Braintree Industrial Estate

Braintree Road

Ruislip

Middlesex

HA4 0EJ UK

Authorised EU Representative

Rashmian EU Ltd

Robwyn House

Suite 3E

Corrintra

Castleblayney

Co. Monaghan

Ireland

www.groov-e.co.uk

Email: info@groov-e.co.uk

Telephone: 020 8839 0978

Register your purchase for extended warranty

www.groov-e.co.uk/warranty